



NEIGHBORHOOD

Hollywood is a European-style getaway nestled between Fort Lauderdale and Miami Beach. The beaches and Intracoastal Waterway are home to the best waterfront experiences. Conveniently located in proximity to both Fort Lauderdale and Miami International airports, 10 minutes away from Bal Harbour Shops and 25 minutes away from renowned and famous South Beach, Hollywood Beach's unique diversity has converted this destination into a city rich with culture and flare that is unparalleled in the world today.

SALES INFORMATION

For more information on Trump Hollywood, please call 954.925.4447 or visit www.trumphollywood.com

ON-SITE SALES CENTER OPEN DAILY
 2711 South Ocean Drive, Hollywood Beach, Florida 33019
 954.925.4447 | 866.925.4447 | www.trumphollywood.com

Sales by Fortune Development Sales in collaboration with The Related Group.



HOLLYWOOD REDEFINED



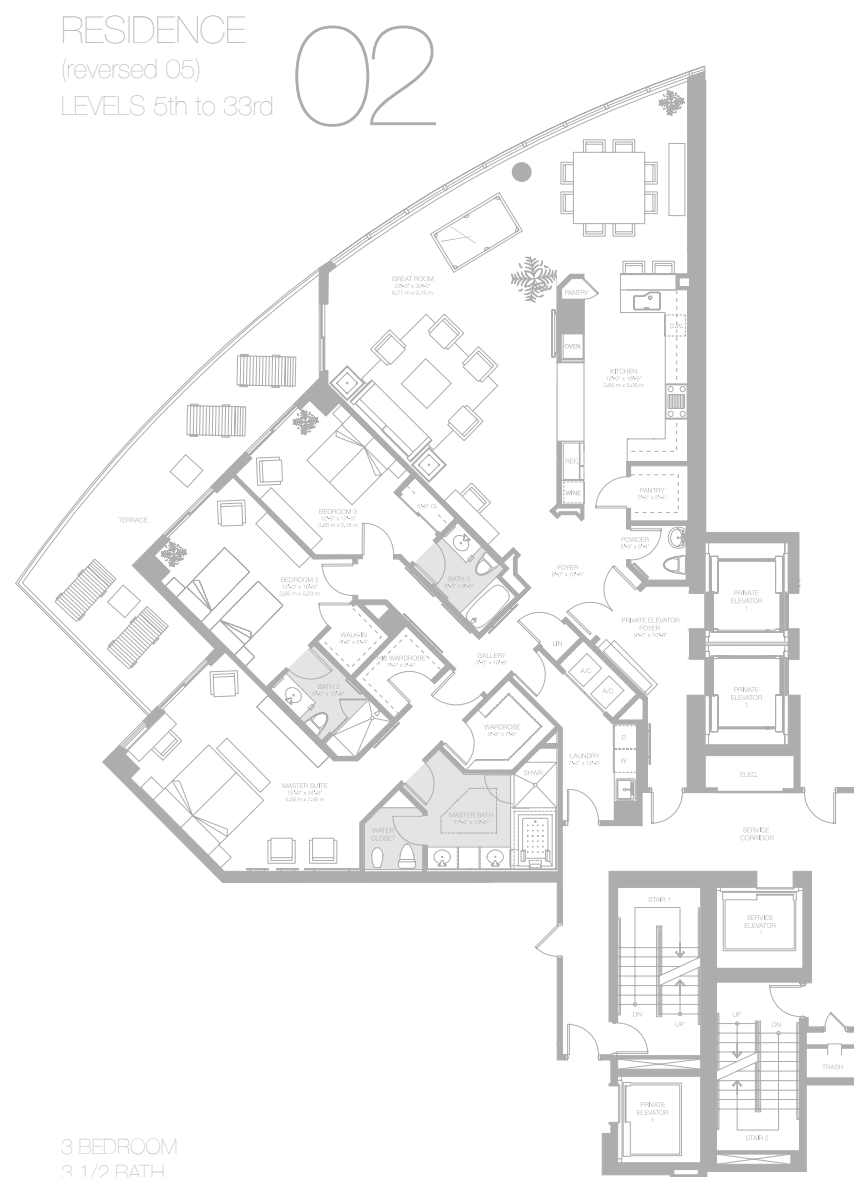
TRUMP
HOLLYWOOD

Oceanfront Luxury
 Condominium Residences
 A Donald J. Trump Signature Property

Welcome to the new definition of luxury
Welcome to Trump Hollywood



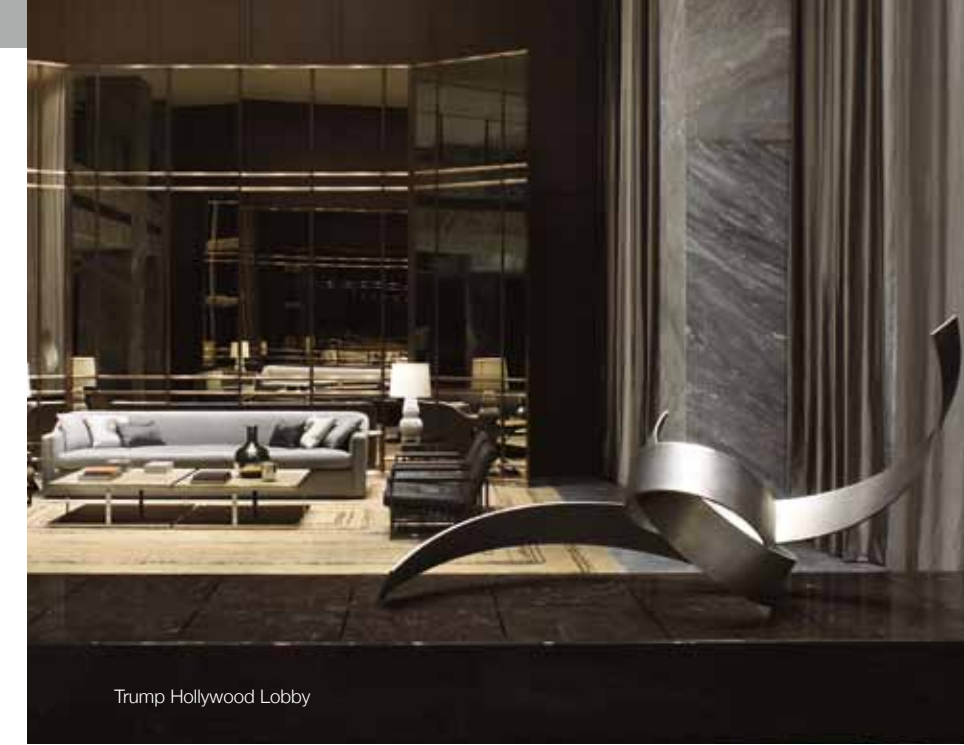
Trump Hollywood Lobby
"The Reflective Forest" by Sawada Hirotochi



3 BEDROOM		
3 1/2 BATH		
ENCLOSED AREA	3,062 SQ. FT.	285 m ²
TERRACE AREA	423 SQ. FT.	39 m ²
TOTAL RESIDENCE	3,485 SQ. FT.	324 m ²



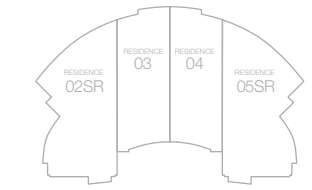
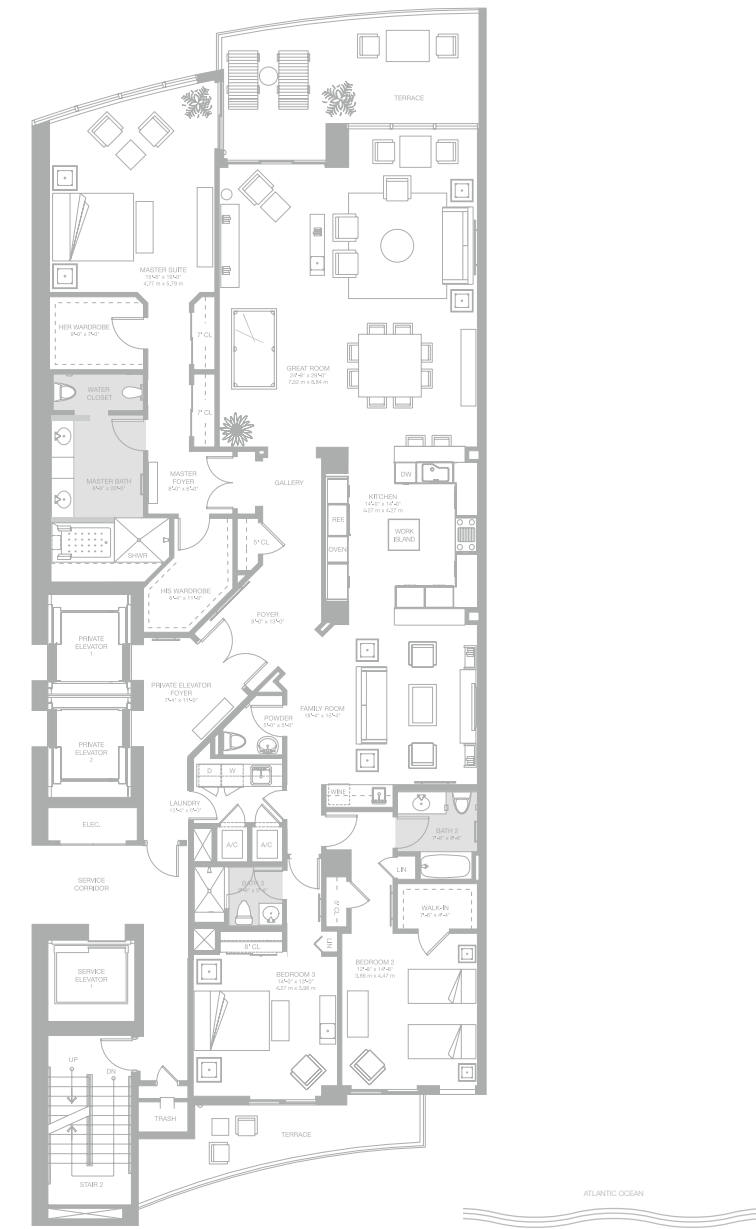
2 BEDROOM & DEN/3		
3 1/2 BATH		
ENCLOSED AREA	2,088 SQ. FT.	196 m ²
TERRACE AREA	373 SQ. FT.	35 m ²
TOTAL RESIDENCE	2,461 SQ. FT.	231 m ²



Trump Hollywood Lobby



3 BEDROOM		
3 1/2 BATH & FAMILY ROOM		
ENCLOSED AREA	3,395 SQ. FT.	316 m ²
TERRACE AREA	445 SQ. FT.	42 m ²
TOTAL RESIDENCE	3,840 SQ. FT.	358 m ²



Stated dimensions are measured to the exterior boundaries of the exterior walls and the centerline of interior demising walls and in fact vary from the dimensions that would be determined by using the description and the definition of the "Unit" set forth in the Declaration (which generally only include the interior space between the perimeter walls and excludes interior structural components). Additionally, measurements of rooms set forth on any floor plan are generally taken at the greatest points of each given room (as if room were a perfect rectangle), without regard for any cutouts. Accordingly, the area of the actual room will typically be smaller than the product obtained by multiplying the stated length times width. All dimensions are approximate and all floor plans and development plans are subject to change.



Trump Hollywood Club Room



4 BEDROOM, 6 1/2 BATHS + DEN / BEDROOM 5		
FAMILY ROOM + HOME OFFICE + STAFF		
ENCLOSED AREA	5086 SQ. FT.	472 m ²
TERRACE AREA	920 SQ. FT.	85 m ²
TOTAL RESIDENCE	6006 SQ. FT.	557 m ²



4 BEDROOM, 6 1/2 BATHS + DEN / BEDROOM 5		
FAMILY ROOM + HOME OFFICE + STAFF		
ENCLOSED AREA	5086 SQ. FT.	472 m ²
TERRACE AREA	920 SQ. FT.	85 m ²
TOTAL RESIDENCE	6006 SQ. FT.	557 m ²



Trump Hollywood Library/Private Dining Room

BUILDING AMENITIES

- Direct oceanfront location on 240 feet of Hollywood's magnificent sandy beaches
- 4.9 acre site straddling South Ocean Drive with both Atlantic Ocean and Intracoastal frontage
- Exclusive 41-story tower with 200 spacious residences
- Lushly landscaped entry plaza with elegant porte-cochere entrance and stunning water display
- Common area amenities include a clubroom with multimedia facilities, billiards and game room
- 4,000 sq ft state of the art fitness center with men and women's steam and sauna facilities
- Home theater
- Wine Cellar and tasting salon
- Climate-controlled Fur Storage
- Lavish Cigar lounge with private humidors
- Breakfast Café
- Library/Private Dining Room with a state of the art catering kitchen
- Elevated pool deck overlooking the Atlantic Ocean featuring a pool side café, heated pool, two spas, and a reflecting pool
- Beach and pool attendant with towel service
- Two levels of beachfront private cabanas
- Private poolside cabanas
- Secure air-conditioned storage spaces
- Three lighted tennis courts and one multi purpose court
- Exclusive concierge staff and services
- 24-hour complimentary valet parking
- 24-hour attended security services
- Wireless internet capabilities in the building's common areas
- Within walking distance to the Diplomat Landing and Hollywood Broadwalk
- Close proximity to the Hollywood/Fort Lauderdale International and Miami International airports



Trump Hollywood Oceanfront Pool Deck



Trump Hollywood Wine Room

RESIDENCE FEATURES

- FOB operated high-speed elevators to individual private elevator foyers
- Service elevators to separate service entrance for each residence through service corridor
- Elegant double entry doors leading to spacious foyer with coffered ceilings
- Flow-through floor plans with panoramic views of Ocean, Intracoastal and City as well as wrap around views from select residences
- Impact resistant floor-to-ceiling tinted glass walls throughout
- Oversized terraces with glass & aluminum railings
- Floor to ceiling impact resistant sliding glass doors to terraces
- Nine-foot ceiling height in living spaces on floors 5 to 33
- Ten-foot ceiling height in living spaces on floors 34 to 40
- Eleven-foot ceiling height in living spaces on penthouse floor
- Smooth finish plaster and drywall ceilings
- Spacious walk-in closets
- High-efficiency central air conditioning and heating system
- The latest in "Smart Building" technology featuring wireless control pad linking residents to building amenities

DEVELOPMENT TEAM

Donald J. Trump and Jorge Perez are pleased to present the premier of The Related Group's best new venture, Trump Hollywood. The address is the premier architectural landmark on Hollywood Beach. Trump Hollywood redefines the very concept of private condominium living. Innovative design, personalized amenities and unparalleled services are masterfully integrated in a one-of-a-kind living environment at the most exclusive location on Hollywood Beach.

DONALD J. TRUMP
President & CEO
The Trump Organization

JORGE M. PEREZ
Chairman & CEO
The Related Group of Florida

